

DT 280

DT 290

Headsets with
dynamic Microphone



DESCRIPTION

The lightweight, closed headsets DT 280 and DT 290 suit ideally for broadcasting applications.

The headphone is featuring an efficient neodymium magnet system, a very high reproduction precision and a balanced sound. Another special feature is the wide transmission range of 10 - 30,000 Hz. The headsets come with 80 Ω or 250 Ω -systems.

The soft circumaural earcups and the fully adjustable padded headband are extremely comfortable. The dynamic microphone can be optimally positioned with the flexible gooseneck. The hypercardioid polar pattern guarantees an extremely high-gain-before feedback and noise cancellation. If necessary the assembly of the microphone holder can be changed so that the microphone can be worn on the left or right side. (In the factory it is assembled on the left side). The cables to the earcups and the microphone run safely in the headband. The connecting cable is single-sided, plug-in type with a golden combi 1/4"/mini jack plug. All parts such as ear pads, headband and gooseneck microphone are easy to replace.

VERSIONS

DT 290	Headset, 200/80 Ω	Order # 441.317
DT 290	same as above, but 200/250 Ω	Order # 447.277
DT 290 V.11	Headset, 200/80 Ω with microphone preamp	Order # 441.384
DT 280	Single-ear-version, 200/80 Ω	Order # 441.309
DT 280	same as above, but 200/250 Ω	Order # 447.269
DT 280 V.11	Single-ear-version, 200/80 Ω with microphone preamp	Order # 442.860

OPTIONAL ACCESSORIES

K 190.00	Bare-ended straight cable, 1.5 m long	Order # 431.575
K 190.00	Bare-ended straight cable, 3 m long	Order # 441.937
K 190.28	Straight cable with 4-pin XLR-socket, 1.50 m long	Order # 445.304
K 190.39	Straight cable for V.11 version of the DT 290 series, with 5-pin XLR-plug to connect to professional cameras (Sony, Philips, Ikegami), 1.50 m long	Order # 475.181
K 190.40	Straight cable with 3-pin XLR-plug and 1/4" jack (6.35 mm), 1.50 m long	Order # 445.894
K 190.40	same as above, but 3 m long	Order # 446.750
K 190.41	Straight cable with 5-pin XLR-plug, 1.50 m long	Order # 445.312
K 190.48	Straight cable with 2 x 3.5 mm stereo jack plug to connect to PC sound cards (Warning: no phantom powering)	Order # 479.470
WK 190.00	Bare-ended coiled cable	Order # 448.176
WS 97 AZ	Wind / pop screen, charcoal-grey	Order # 465.313

SPARE PARTS

EDT 250 V	Ear pads, velours, circumaural	Order # 442.704
EDT 250 S	Ear pads, soft PVC, circumaural	Order # 443.549

Germany

Theresienstr. 8
D-74072 Heilbronn
Tel. +49 (0)71 31 / 6 17-0
Fax +49 (0)71 31 / 617-224
E-mail: info@beyerdynamic.de
Internet: www.beyerdynamic.de

United States

56 Central Ave.
Farmingdale, NY 11735
Tel. +1 (631) 293-3200
Fax +1 (631) 293-3288
E-mail: salesUSA@beyerdynamic.com
Internet: www.beyerdynamic.com

Great Britain

17 Albert Drive
Burgess Hill RH15 9TN
Tel. +44 (0)1444 / 258 258
Fax +44 (0)1444 / 258 444
E-mail: sales@beyerdynamic.co.uk
Internet: www.beyerdynamic.co.uk

TECHNICAL SPECIFICATIONS

Headphone

Transducer principle	Dynamic
Operating principle	Closed
Transmission range	10 - 30,000 Hz
Nominal impedance	80 Ω or 250 Ω / system
Nominal SPL at 1 kHz	100 dB SPL at 1 mW = 0.28 V to 80 Ω
T.H.D.	< 0.2%
Nominal power rating	100 mW = 120 dB = 2.8 V to 80 Ω
Ambient noise insulation	approx. 16 dBA
Average pressure on ears	4.5 N
Weight without cable	170 g (DT 280), 240 g (DT 290)

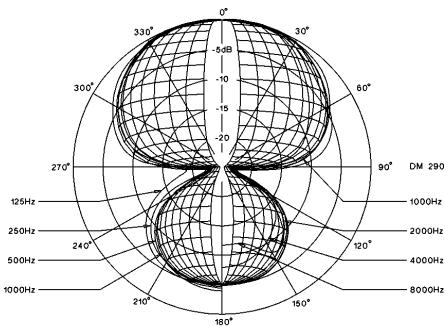
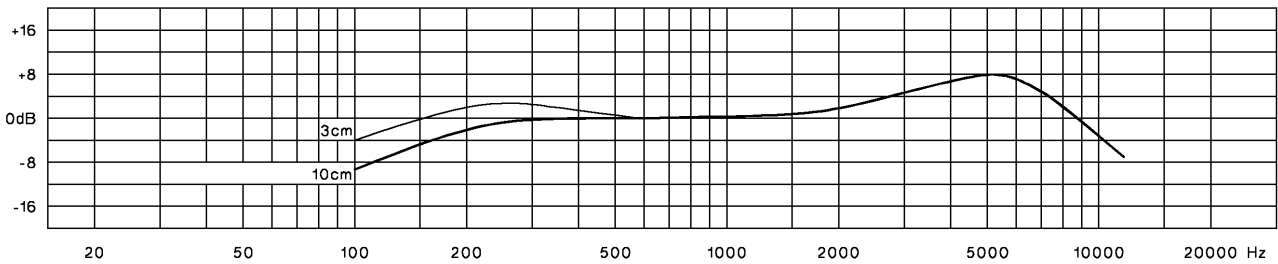
Microphone

	DT 280/290	DT 290 V.11
Transducer principle	Dynamic	Dynamic
Transmission range	40 - 12,000 Hz	40 - 12,000 Hz
Polar pattern	Hypercardioid	Hypercardioid
Output voltage at a distance of 5 cm	approx. 3 mV	approx. 1.5 V
Nominal impedance	200 Ω	200 Ω
Nominal output impedance	> 1000 Ω	-
Current consumption	-	8 - 56 mA

FREQUENCY RESPONSE & POLAR PATTERN

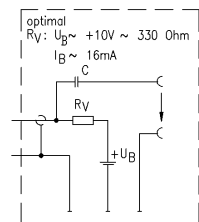
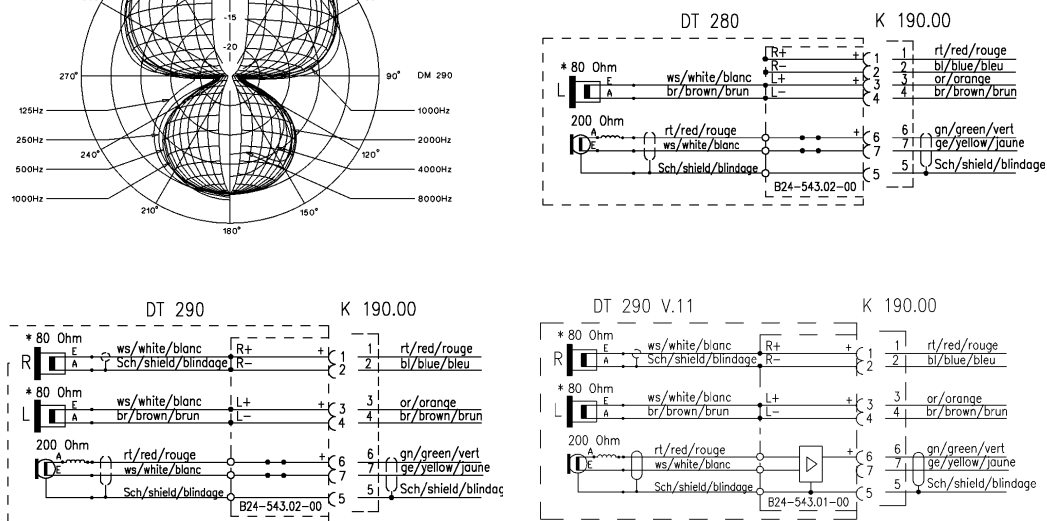
This polar pattern and frequency response curve (measuring tolerance ± 2.5 dB) correspond to typical machine run specifications for this microphone.

Frequency response curve ± 2.5 dB 0 dB = 3 mV at a distance of 5 cm



WIRING DIAGRAMS

Positive pressure produces positive voltage on connection 6 of the head-phone socket.



* Sonderausführung 250 Ohm System lieferbar
* Special model 250 ohm system available